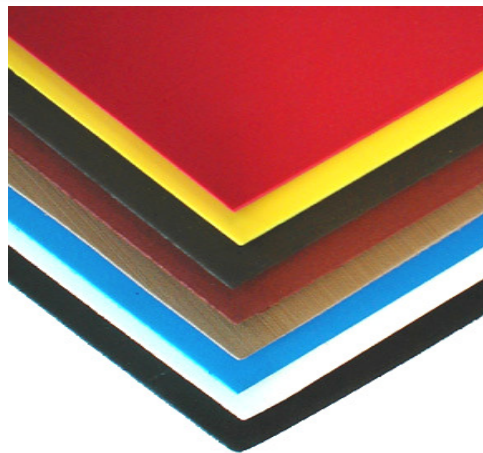
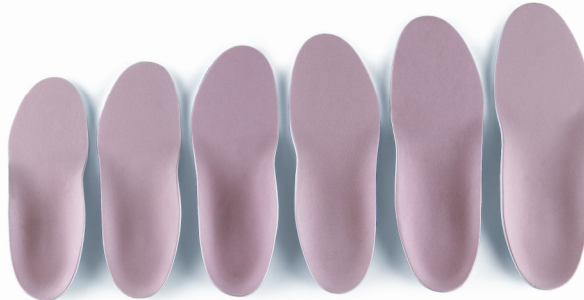
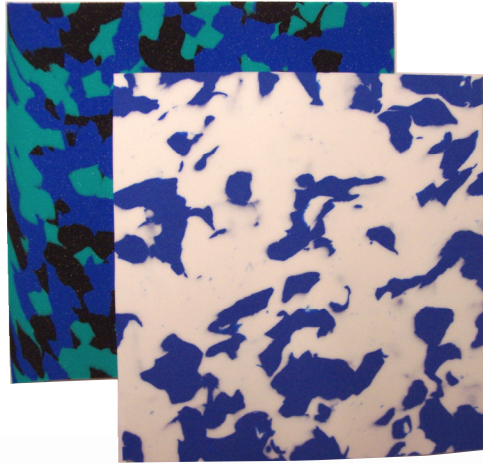




Advance Orthopedic Footwear Orthopedic Materials & Supplies



SoleTech® Inc.

425 Washington St. • Claremont, NH 03743 • 603-542-8905
• 877-625-9494 • Fax 603-542-8909 • www.soletech.com

Advance Comfort Footwear

The Fit

- Last provides a medium depth fit for a wide range of feet
- Ample room on the lateral side of the last accommodates the fifth toe
- Comes with two different insoles for ease in adjusting the fit
- Insoles are easily removable to accommodate custom orthoses

Men's



Women's



Advance[™]
footwear

SoleTech® Inc.

425 Washington St. • Claremont, NH 03743 • 603-542-8905
• 877-625-9494 • Fax 603-542-8909 • www.soletech.com

Advance Orthopedic Footwear

Men's Women's



E3010

**This style is available in Narrow



E3510



E3110



E3610



E3020



E3543



E3590

Advance Expandable Footwear



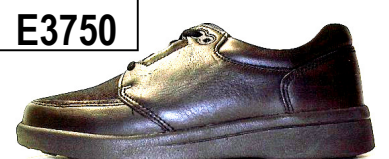
E3450



E3950



E3250



E3750

Advance[™]
f o o t w e a r

The Fit

- Last provides a maximum depth fit for a wide range of feet
- Deep toe box to accommodate hammer toes comfortably
- Ample room on the lateral side of the last accommodates the fifth toe
- Comes with three different insoles for ease in adjusting the fit
- Insoles are easily removable to accommodate custom orthoses and AFO's

Women's Advance® Orthopedic Footwear available in sizes 5-10 , 11 & 12 (M , W & XW)

Women's Advance® Comfort Footwear available in sizes 7-10 , 11 & 12 (N) / 5-10 , 11 & 12 (M , W & XW)

Men's Advance® Orthopedic Footwear available in sizes 6-12 , 13 & 14 (M , W & XW)

Men's Advance® Comfort Footwear available in sizes 9-12 , 13 & 14 (N) / 6-12 , 13 & 14 (M , W & XW)

The Therapeutic Shoe Bill / Both Advance® Comfort Footwear and Advance® Orthopedic Footwear meet all of the guidelines of the Therapeutic Shoe Bill, Medicare (Part B), for off the shelf adjustable depth shoes. The diabetic patient now has two choices for comfort, style and well being-all reimbursable under Medicare.

SoleTech® Inc.

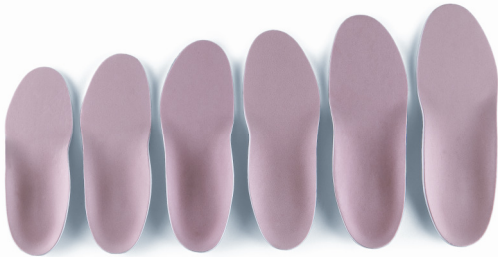
425 Washington St. · Claremont, NH 03743 · 603-542-8905
· 877-625-9494 · Fax 603-542-8909 · www.soletech.com

SoleTech® Adjustable Night Splint



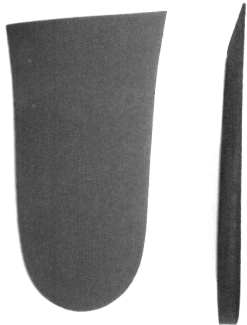
Part number	Size	Height	Length	Shoe size (Men's)	Shoe size (Women's)
E60913301S	S	33.5cm	24.5cm	Up to 7	Up to 7-1/2
E60913301M	M	36.5cm	26.5cm	7-1/2 ~ 10	8 ~ 10-1/2
E60913301L	L	38cm	28cm	10-1/2 and up	11 and up

The SoleTech® Adjustable Night Splint is primarily intended for treating Plantar Fasciitis and Achilles Tendonitis, and may be ideal for other conditions recommended by a physician. You should not walk or attempt to place weight on the foot while using this splint without approval from your physician. Do not use outdoors, or on slippery or uneven surfaces. Review all instructions, contraindications, care and cautions before using this product.



Part number	Size	Shoe Size (Women's)	Shoe Size (Men's)
E510101	XS	5-7	N/A
E510102	SMALL	7.5-9	6-7
E510103	MED	9.5-12	7.5-8.5
E510104	LARGE	N/A	9-11
E510105	X-LARGE	N/A	11.5-13
E510106	XX-LARGE	N/A	14

**HCPCS A5512
Diabetic Insoles**
Available in sizes
XS, S, M, L, XL AND XXL



Orthopedic High Abrasion
Replacement Sole 8 Iron
Sizes: 8, 10, 12 and 14
Color: Black
24 Pair Per Case
Part number-9808

SoleTech® Eva Wedge
Available in 1/4" & 3/8" thick
Sizes: , Med, Large and X-large
Part number -E811

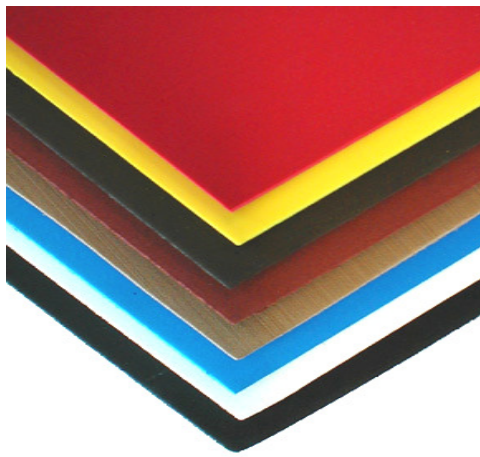


SoleTech® Casting Foam

Description	Stock #
Double Trays - 12 count 14" x 6" x 2 1/8"	41404
Folding Double Tray—12 count Foam: 14" x 6" x 2 1/4"	41505
Single Tray - 24 count 14" x 6" x 2"	41909
Bulk Foam—24 count 14" x 6" x 2 1/8"	41808
Min. order - 3 cases on bulk.	

SoleTech® Inc.

425 Washington St. · Claremont, NH 03743 · 603-542-8905
·877-625-9494 · Fax 603-542-8909 · www.soletech.com



SoleTech® Ultra-Cloud 17-20 Durometer
Sheet size 18" X 36"

Part number	Standard	Metric	Irons
8506	1/8"	3 mm	6
8509	3/16"	5 mm	9
8512	1/4"	6 mm	12
8518	3/8"	10 mm	18
8524	1/2"	13 mm	24

Available in Black, White and Medical Blue:
6I, 12I, 18I & 24I
Medical Blue only:
9I

SoleTech® Cloud 35-40 Durometer
Sheet size 18" X 36"

Part number	Standard	Metric	Irons
8103	1/16"	1.5 mm	3
8106	1/8"	3 mm	6
8112	1/4"	6 mm	12
8118	3/8"	10 mm	18
8124	1/2"	13 mm	24
8130	5/8"	16 mm	30
8136	3/4"	19 mm	36
8148	1"	25 mm	48

Available in Black, Brown, White & Almond
3I, 6I, 12I, 18I, 24I, 30I, 36I & 48I
Available in Medical Blue 3I, 6I, 12I, 18I & 24I
Available in Bright Red 6I, 12I, 18I & 24I
Available in Gray 9I, 12I, 18I, 24I & 48I
Available in Pearl 12I, 18I, 24I, 36I & 48I

SoleTech® Cloud 45 43-47 Durometer
Sheet size 18" X 36"

Part number	Standard	Metric	Irons
8606	1/8"	3 mm	6
8612	1/4"	6 mm	12
8618	3/8"	10 mm	18
8624	1/2"	13 mm	24

Available in White & Blue 6I, 12I, 18I & 24I
Available in Natural 12I

SoleTech® SBS 50-55 Durometer
Sheet size 18" X 36"

Part number	Standard	Metric	Irons
8206	1/8"	3 mm	6
8212	1/4"	6 mm	12
8215	5/16"	8 mm	15
8218	3/8"	10 mm	18
8221	7/16"	11 mm	21
8224	1/2"	13 mm	24
8230	5/8"	16 mm	30
8236	3/4"	19 mm	36

Available in Black, Brown, White & Almond
6I, 12I, 15I, 18I, 21I, 24I, 30I & 36I
Available in Bright Red 6I, 12I, 18I & 24I
Available in Taupe 12I & 24I
Available in Clay 12I, 15I, 18I & 24I
Available in Gray 12I, 18I, 24I & 30I
Available in Pearl 12I, 18I & 24I

SoleTech® SBS Firm 60-65 Durometer
Sheet size 18" X 36"

Part number	Standard	Metric	Irons
8406	1/8"	3 mm	6
8412	1/4"	6 mm	12
8415	5/16"	8 mm	15
8418	3/8"	10 mm	18
8424	1/2"	13 mm	24
8430	5/8"	16 mm	30
8436	3/4"	19 mm	36

Available in Black 6I, 12I, 15I, 18I, 24I, 30I & 36I
Available in White 6I, 12I, 18I, 24I & 30I
Available in Brown 12I & 24I
Available in Bright Red 12I, 18I & 24I
Available in Medical Blue 12I, 18I & 24I
Available in Light Navy 18I & 24I

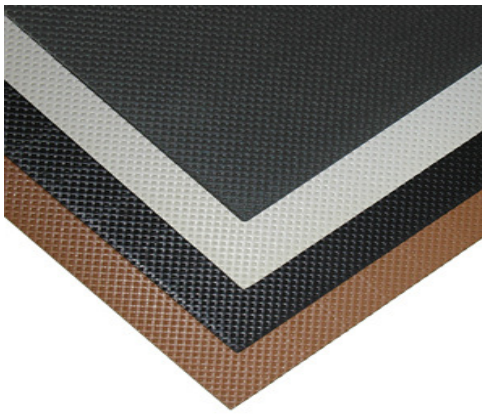
SoleTech® SBS X-tra Firm 70+ Durometer
Sheet size 18" X 36"

Part number	Standard	Metric	Irons
9506	1/8"	3 mm	6
9512	1/4"	6 mm	12
9518	3/8"	10 mm	18
9524	1/2"	13 mm	24

Available in Black 6I, 12I & 24I
Available in White 6I, 12I, 18I & 24I
Available in Brown 18I
Available in Purple 24I

SoleTech® Inc.

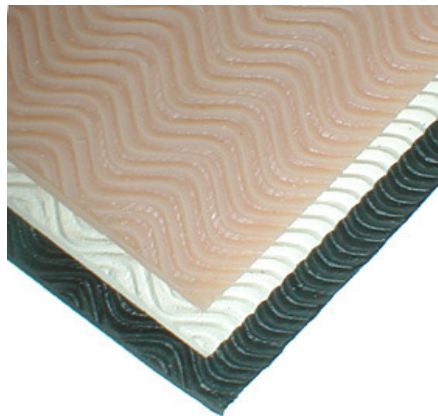
425 Washington St. · Claremont, NH 03743 · 603-542-8905
· 877-625-9494 · Fax 603-542-8909 · www.soletech.com



SoleTech® Diamond 50-55 Durometer
Sheet size 18" X 36"

Part number	Standard	Metric	Irons
8312	1/4"	6 mm	12
8315	5/16"	8 mm	15
8318	3/8"	10 mm	18
8321	7/16"	11 mm	21
8324	1/2"	13 mm	24
8330	5/8"	16 mm	30
8336	3/4"	19 mm	36

Available in Black, Brown, White & Almond
12I, 15I, 18I, 21I, 24I, 30I & 36I
Available in Clay 12I, 15I, 18I & 24I
Available in Gray 12I, 18I, & 24I



SoleTech® Wavy Rib
Sheet size 15" X 30"

Part number	Standard	Metric	Irons
9007	5/32"	4.5 mm	7
9009	3/16"	4.8 mm	9
9012	1/4"	6 mm	12

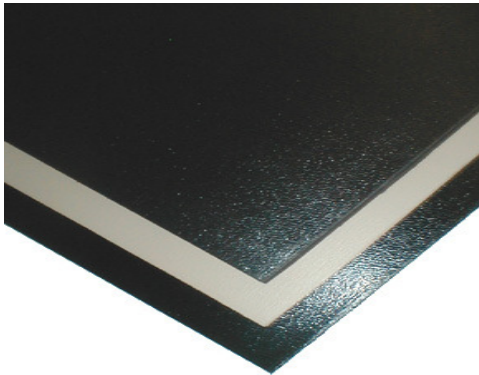
Available in Black, White & Natural



SoleTech® Gum Crinkle
Sheet size 15" X 30"

Part number	Standard	Metric	Irons
8907	5/32"	4.5 mm	7
8909	3/16"	4.8 mm	9
8910	7/32"	5.6 mm	10.5
8912	1/4"	6 mm	12
8915	5/16"	8 mm	15

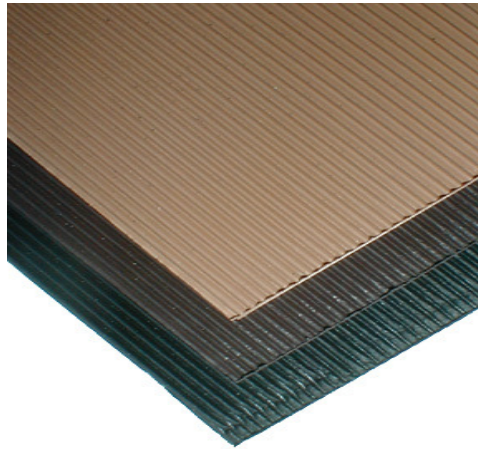
Available in Black & Natural
7I, 9I, 10.5I, 12I & 15I
Available in Tobacco
7I, 9I, 10.5I & 12I



SoleTech® Composition Soling
Sheet size 18" X 36"

Part number	Standard	Metric	Irons
9405	3/32"	3 mm	5
9407	5/32"	3.8 mm	7
9409	3/16"	4.8 mm	9
9410	7/32"	5.6 mm	10.5
9412	1/4"	6 mm	12
9414	9/32"	7.5mm	14

Available in Black, Brown & Oak
5I, 7I, 9I, 10.5I & 12I
Available in Black
14I



SoleTech® Fine Rib Soling
Sheet size 18" X 36"

Part number	Standard	Metric	Irons
9306	1/8"	3 mm	6
9309	3/16"	4.8 mm	9
9210	7/32"	5.6 mm	10.5
9212	1/4"	6 mm	12
9215	5/16"	8 mm	15
9218	3/8"	10 mm	18

Available in Black, Brown & Oak
6I, 10.5I, 12I & 15I
Available in Black
9I & 18I



SoleTech® Wide Rib Soling
Sheet size 18" X 36"

Part number	Standard	Metric	Irons
9107	5/32"	3.8 mm	7
9109	3/16"	4.8mm	9
9110	7/32"	5.6 mm	10.5
9112	1/4"	6 mm	12
9115	5/16"	8 mm	15

Available in Black & Brown
7I, 9I, 10.5I & 12I
Available in Black
15I

SoleTech® Inc.

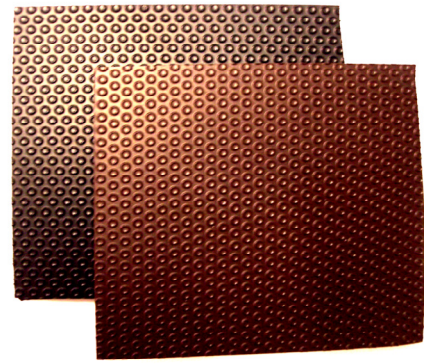
425 Washington St. · Claremont, NH 03743 · 603-542-8905
·877-625-9494 · Fax 603-542-8909 · www.soletech.com



Plastazote Sheets
Available in Pink & White
Sheet size 30"X40"



SoleTech® Cork
Available in
50-55 durometer & 60-65 durometer

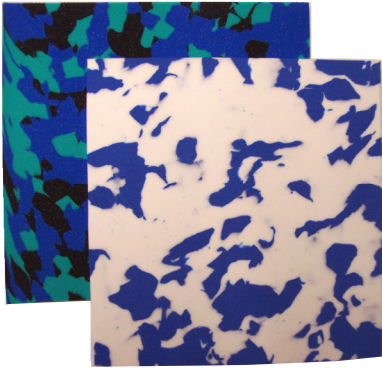


Rubflex Suction Cup Soling
Colors: Black & Brown

Part number	Standard	Metric	Irons
4301-62	1/8"	3 mm	6
4304-62	3/16"	5 mm	9
4303-62	1/4"	6 mm	12
4307-62	3/8"	10 mm	18
4302-62	1/2"	13 mm	24

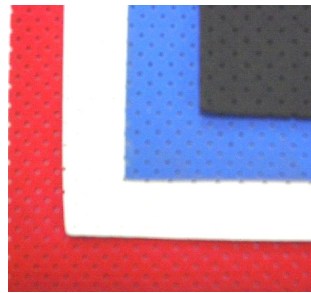
Part number	Standard	Metric	Irons
E9506	1/8"	3 mm	6
E9512	1/4"	6 mm	12
E9518	3/8"	10 mm	18
E9524	1/2"	13 mm	24

Part number	Standard	Metric	Irons
9904	1/8"	4 mm	6
9906	1/4"	6 mm	12
9908	5/16"	8 mm	15
9910	3/8"	10 mm	18



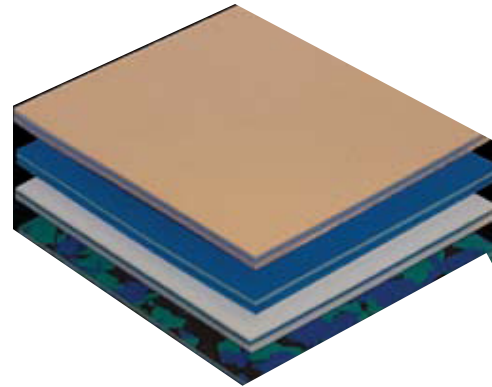
Multi Color Orthopedic Cloud
Blue and White Cloud
Available in 2.5mm, 6mm & 15 mm

Blue, Black, and Aqua Cloud
Gold, White & Black
Available in 2.5mm
Part number-E9825



Perforated Cloud
36"x58"

2 mm Available in Red, White, Blue & Black
3 mm Available in Blue & Red
8 mm Available in White
Part number-E980



Part number	Description
E4210-00	1/8" Blk Cloud/1/16" Blue Poron/1/8" Blk Cloud
E4230-00	1/16" Blue Cloud/1/16" Blue Poron/1/8" Blue Cloud
E4232-00	1/16" Pink Cloud/1/16" Blue Poron/1/8" Pink Cloud
E4233-00	1/8" Blue Cloud/1/8" Blk Firm/1/8" Blue Cloud
E4234-00	2.5mm B/B/A Cloud/1/16" Blue Poron/2.5mm B/B/A Cloud
E4235-00	1/4" Pink Plastazote/1/16" Blue Poron/ 1/8" Blue Cloud
E4235-27	1/8" Pink Plastazote/1/16" Blue Poron/ 1/8" Blue Cloud
E4238-00	1/8" Pink Plastazote/1/16" Blue Poron/ 1/4" Blue Cloud
E4238-03	1/8" Pink Plastazote/1/16" Blue Poron
E4238-04	1/8" Pink Plastazote/1/8" Blue Poron
E4238-05	1/4" Pink Plastazote/1/8" Blue Poron
E4270-00	1/8" Gray Cloud/1/8" Blk Firm/1/8" Gray Cloud

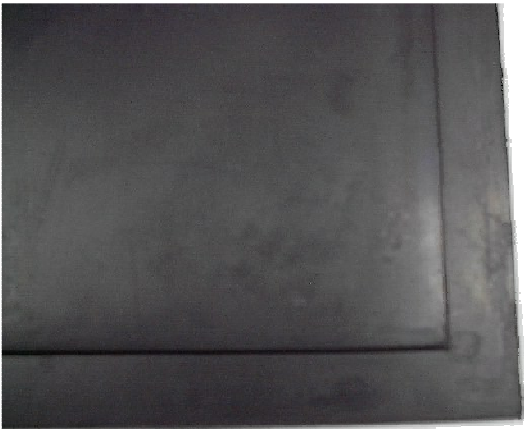


Medical grade blue Poron®

Part number	Standard	Metric	Irons
E750350200	1/16"	2 mm	3
E750650200	1/8"	3 mm	6
E75120200	1/4"	6 mm	12

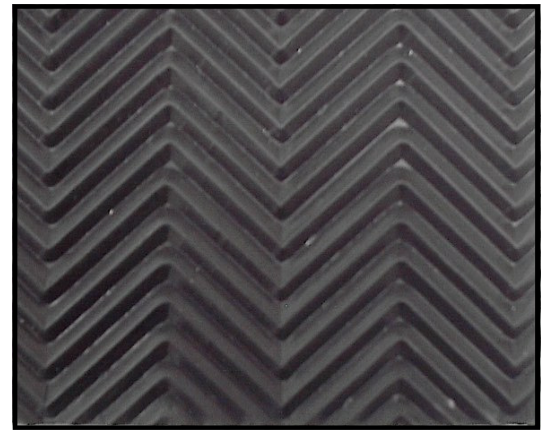
SoleTech® Inc.

425 Washington St. • Claremont, NH 03743 • 603-542-8905
• 877-625-9494 • Fax 603-542-8909 • www.soletech.com



SoleTech® 2000 Hi Abrasion Sheet
Sheet size 11"x15"
Non-slip & Long wearing

Part number	Standard	Metric	Irons
9912	1/4"	6 mm	12



Herringbone soling
Sheet size 15"x30"

Part number	Standard	Metric	Irons
9709	3/16"	5 mm	9

Available in Black & White



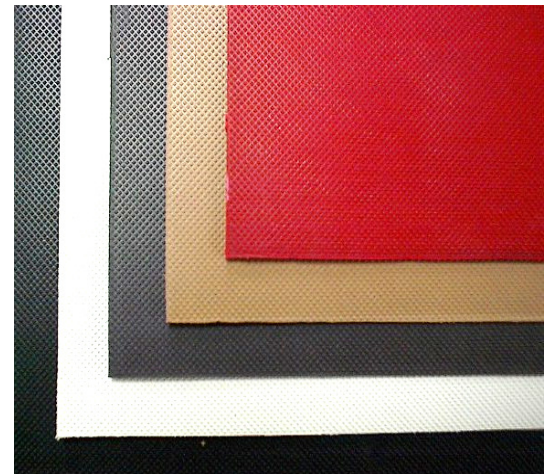
Adhesives
Jet Set Regular
Jet Set All Time
and
Jet Set Thinner
Part number-STJS



Neoprene material
Blue, Black and Green
Sheet size 42"x52"

Part number	Standard	Metric	Irons
E760	1/16"	2 mm	3
E760	1/8"	3 mm	6

1/16" Available in Blue & Black
 1/8" Available in Blue, Black, Green & Wine



SoleTech® 3.51 Minicheck
Soleguard sheets
18" X 36"

Part number	Standard	Metric	Irons
9603	1/16"	2 mm	3.5

Available in Black, White, Neutral, Oak & Red

SoleTech® Inc.

425 Washington St. · Claremont, NH 03743 · 603-542-8905
 ·877-625-9494 · Fax 603-542-8909 · www.soletech.com